

## Biology Worksheet

### Class 7

- **Topic- Respiration, Excretion and Nervous system**

#### **Q1. Define:**

- i. Reflex action
- ii. Coordination
- iii. Nephron
- iv. UTI

#### **Q2.Fill in the blanks:**

- i. \_\_\_\_\_ neurons carry impulses from the body to the brain.
- ii. The food prepared by plants is stored in \_\_\_\_\_.
- iii. \_\_\_\_\_ is the basic unit of nervous system.
- iv. In yeast, respiration takes place in the absence of \_\_\_\_\_

#### **Q3. Give reasons for the following:**

- i. Pulling away of hand from a hot object is reflex action.
- ii. It is not advisable to sleep under a tree during night.
- iii. Plants are called the lungs of the earth.

#### **Q4.Name the following:**

- i. Nerves emerging from the brain.
- ii. Part of CNS extends from the medulla of the brain and runs down through the vertebral column.
- iii. Energy rich chemical molecule released during respiration.
- iv. A physical process in which an organism inhales and exhales.
- v. Two kidney shaped cells surround the opening of stomata.

#### **Q5.Draw the diagrams of:**

- i. Neuron
- ii. Nephron

iii. Stomata

.

**Q6. Differentiate between:**

i. CNS and PNS

ii. Reflex action and voluntary action

• **Topic- Kingdom classification**

**Q1 Give reasons for the following:**

i. Invertebrates are delicate and soft.

i. Warm blooded and cold blooded

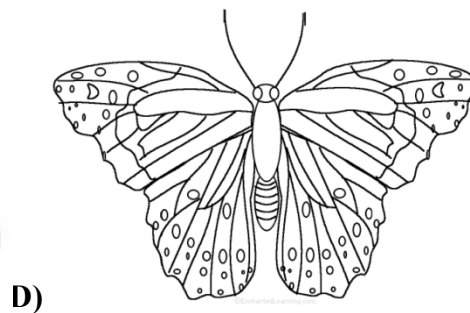
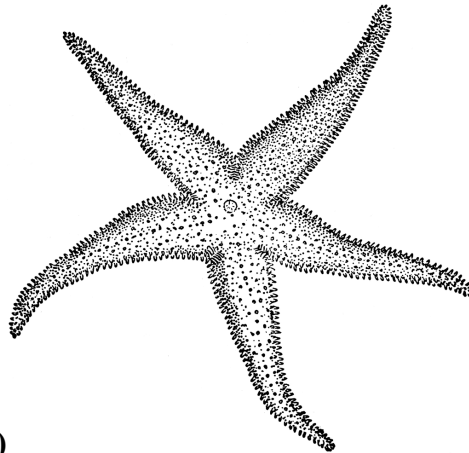
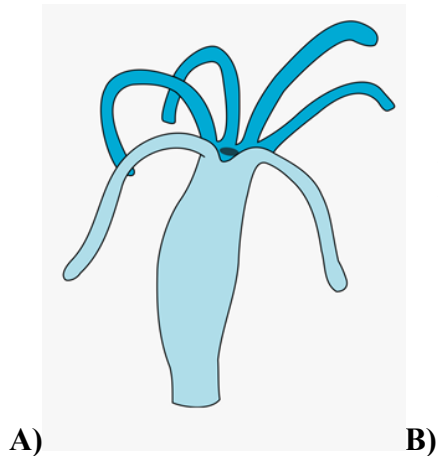
ii. Vertebrates and invertebrates

iii. Annelida and Arthropoda

**Q2. Classify the following animals into their respective groups:**

Sycon, flatworm, leech, spider, shark, toads, lizard, crow.

**Q3. Identify the organisms ,give their phylum with two important characteristics.**



**Q4. Give one word for the following:**

- i. Animals without backbone.
- ii. Porous animals.
- iii. Joint-footed animals.
- iv. Animals with soft body and hard shell.
- v. Warm blooded animals with mammary glands.